

Alternatives to the Circumferential Highway Chittenden County, Vermont

CIRC Alternatives Task Force
Process and Outcomes

Presentation to the
Vermont House and Senate Transportation Committees

Friday, January 24, 2014

Brian Searles, Secretary

Vermont Agency of Transportation (VTrans)

Michele Boomhower, Assistant/MPO Director

Chittenden County Regional Planning Commission

Ken Robie, Program Manager

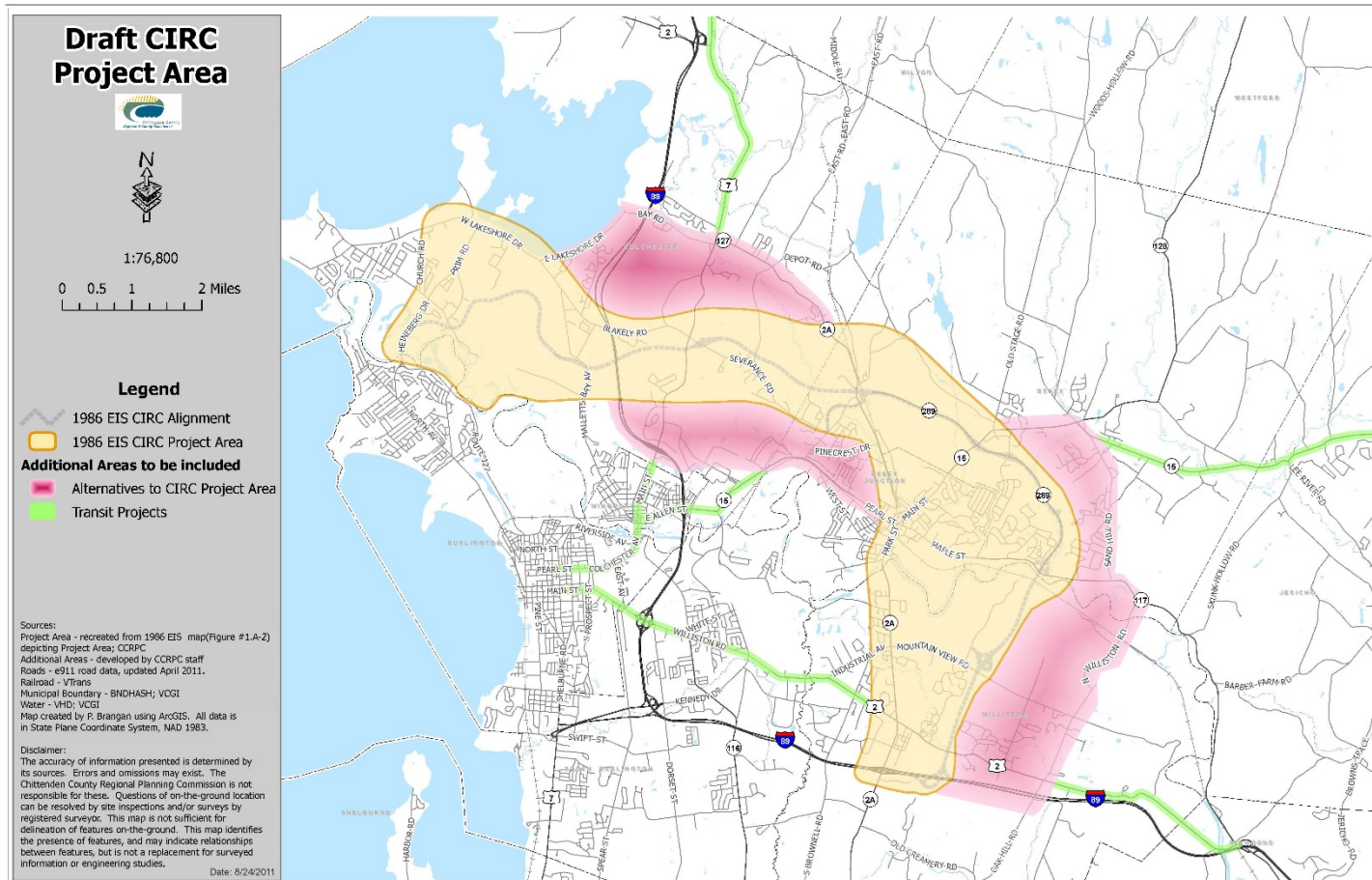
Highway Safety & Design, VTrans

Agenda

- Introduction to the CIRC Alternatives: a Case for Change
- The CIRC Alternatives Task Force – Process and Outcomes
- Phase III Projects Presentation
- Questions

Brian Searles, Secretary Vermont Agency of Transportation (VTrans)

Introduction to the CIRC Alternatives: a Case for Change



**Michele Boomhower, Assistant/MPO Director
Chittenden County Regional Planning Commission**

The CIRC Alternatives Task Force – Process

Task Force Structure

Task Force Membership

Task Force Process

Task Force Outcomes and Regional Impact

Task Force Structure

Representation from All Constituencies in the CIRC Study Area

The “CIRC” Communities

Williston, Essex, Essex Junction, Colchester

Environmental Community

Vermont Natural Resources Council

Conservation Law Foundation

Preservation Trust of Vermont

Business Community

IBM

Greater Burlington Industrial Corporation (GBIC)

General Liasion

Regional Transportation Partners

CCTA and Local Motion (Bike/Ped Represenataion)

State & Federal Agencies

Agencies of Transportation, Commerce, Natural Resource

Federal Highway Administration

**Staffed by the Chittenden County Regional Planning Commission
and numerous consulting firms**

Task Force Membership

The “CIRC” Communities: Municipal Chair, Municipal Manager, CCRPC Rep.
(See Page 3 of CIRC Alternatives Task Force Final Report)

Business Community

Tim Baechle, IBM; Curt Carter, GBIC; Jeff Nick, J.L. Davis

Environmental Community

Brian Shupe, VNRC; Sandy Levine, CLF; Paul Bruhn, PTV

Regional Transit Partners

Meredith Birkett, CCTA; Jason Van Drieshce, Local Motion

State & Federal Agencies

Brian Searles, VTrans

Mary Borg, VANR

Noelle MacKay, ACCD

Chris Jolly, FHWA

Project Management

Michele Boomhower, CCRPC

Task Force Process

1. Identification of the **Area of Impact**
2. Agreement by Task Force on **Engagement & Decision Making**
3. **Prioritization** of Projects which could move quickly for **Phase I**
4. Submission of **Phase I Project Recommendations** to the 2012 General Assembly as part of the Transportation Capital Program
5. **Prioritization** of Planning Studies to be completed for **Phase II**
6. Submission of **Phase II Project Recommendations** to the 2013 General Assembly as part of the Transportation Capital Program
7. Completion of **Williston Essex Network Transportation Study (WENTS)** to identify projects for this sub area of the CIRC Study Area
8. **Completion of Scoping projects** identified through the WENTS process and other projects prioritized in Essex and Colchester for **Phase III**
9. Submission of **Phase III Project Recommendations** to the 2014 General Assembly as part of the Transportation Capital Program

Task Force Outcomes and Regional Impact

Phase I Project Approved by the General Assembly – 2012

- I-89, Exit 16, Interchange Upgrade, Colchester
- VT2A/VT289, Interchange Upgrade, Essex
- Crescent Connector Road, Essex Junction
- VT2A/James Brown Drive, Intersection Upgrade, Williston
- Regional Transportation Demand Management (TDM) Programming
 - VT15, US2, VT2A Transit Shelters (16)
 - CIRC Study Area Adaptive Signal Control Upgrades
 - Pocket Park & Ride Spaces
 - Go! Chittenden County TDM Program Expansion
 - Bike Commuter Employer/Employee Programming

Task Force Outcomes and Regional Impact

Phase II Project Approved by the General Assembly – 2013

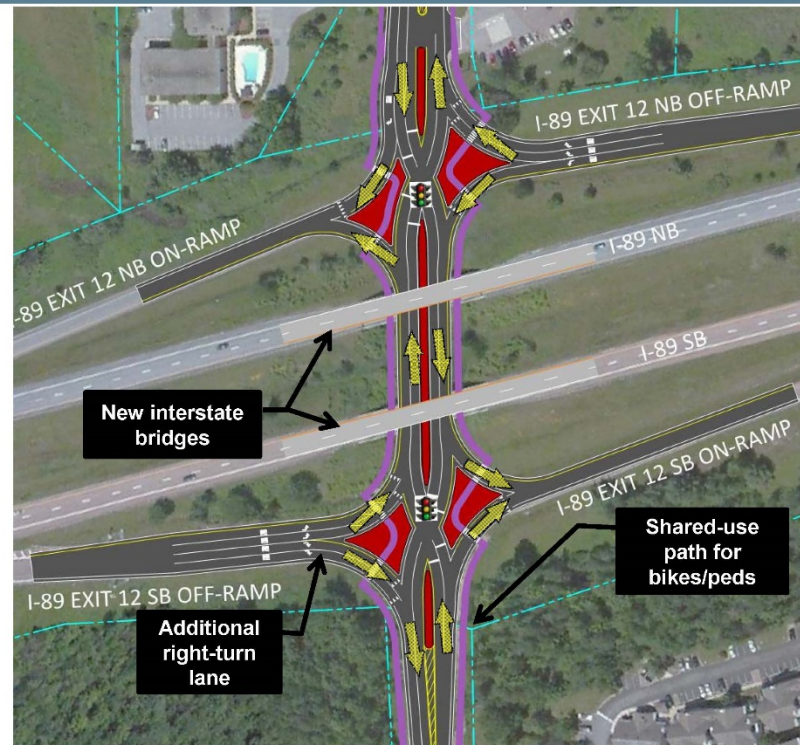
- US2/Trader Lane, Signal Installation, Williston
- Severance Corners, Intersection Improvements, Colchester
- VT15/Sand Hill Road, Intersection Upgrade, Essex
- VT15 Post Office Sq to 5 Corners, Roadway Improvements, Essex Jct.
- VT15 Multiuse Path, Winooski, Colchester, Essex, Essex Junction
- Regional Transportation Demand Management (TDM) Programming
 - VT2A, VT15 Adaptive Signal Control Upgrades
 - Go! Chittenden County TDM Program Expansion
 - CCTA VT15 Commuter Service: Jeffersonville to Burlington and Williston Mid-Day Service

Ken Robie, Program Manager Highway Safety & Design, VTrans

Phase III Projects Presentation



Long Term Alternative 2: Exit 12 Interchange – *Diverging Diamond*



Phase III Implementation Project

Williston

- I-89, Exit 12 to Taft Corners, Connectors, Intersection, Interchange and Roadway Improvements
- VT 2A/Industrial Ave/Mountain View Road to James Brown Drive, Intersection and Roadway Improvements
- US 2 Taft Corners to Williston Village, Multiuse Path
- Mountain View Road, Shared Shoulder
- Growth Center, Sidewalk and Multiuse Path Connectors

Essex

- VT 117/North Williston Road, Intersection and Hazard Mitigation Improvements
- VT 15 Old Stage Road to Essex Way, Multiuse Path
- VT 15/Susie Wilson Road/Kellogg Road, Intersection and Roadway Improvements

Phase III Implementation Project

Colchester

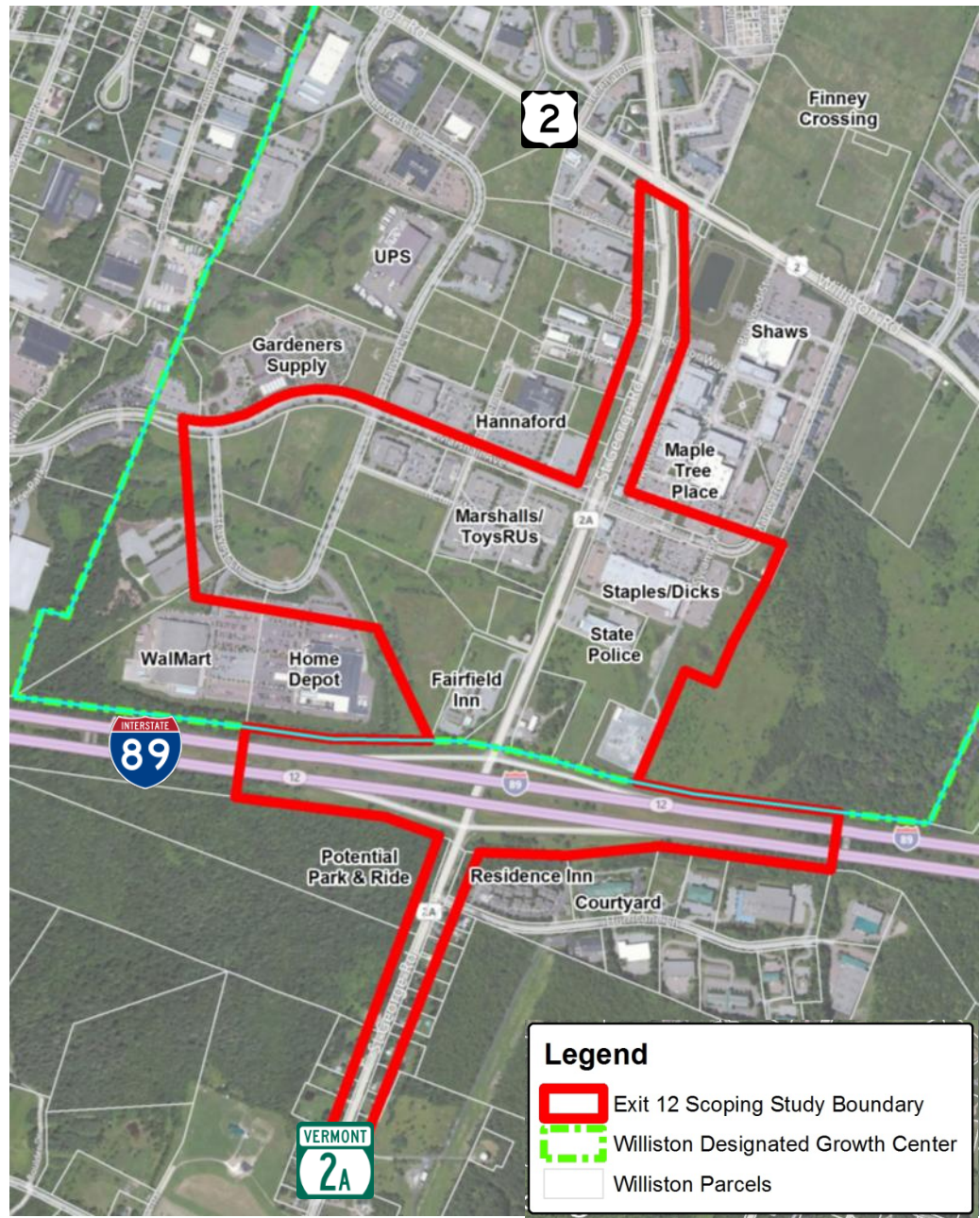
- Severance Road/Mill Pond Road, Multiuse Path and Intersection Upgrade
- VT 2A Village Main Street, Intersection and Roadway Improvements
- VT127 Blakely Road/Laker Lane & Prim Road/West Lakeshore Drive Intersection Upgrades

CCTA Regional Commuter Transit Service

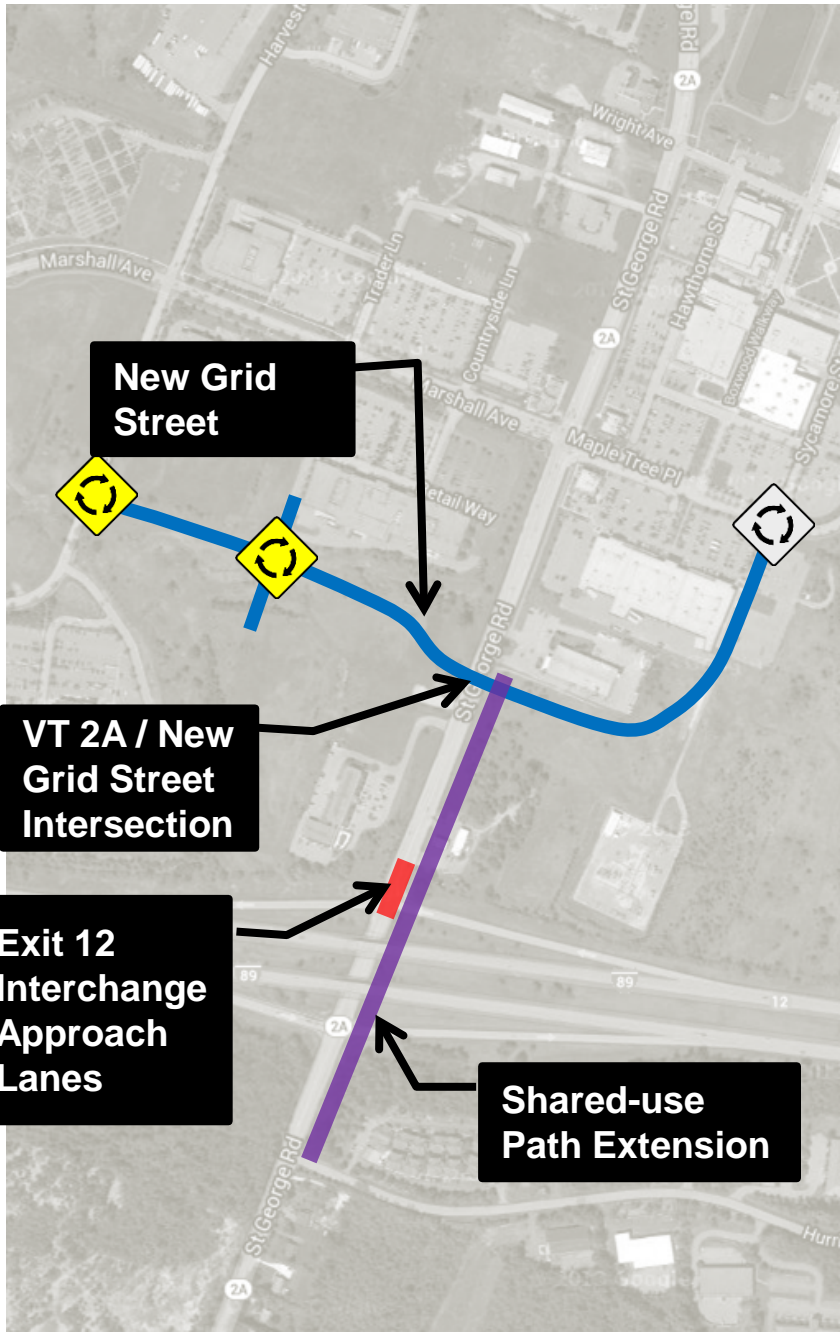
- Milton-Colchester-Burlington
- Essex-Williston-Waterbury-Montpelier
- Associated Park & Rides

Phase III: I-89 Exit 12 to Taft Corners, Williston

Develop transportation alternatives that address existing & projected **traffic congestion**, enhance **safety** for all users, improve **bike-pedestrian connections** through the interchange, and accommodate **economic growth** in the area.



Phase III: Short & Medium Term Components: Exit 12



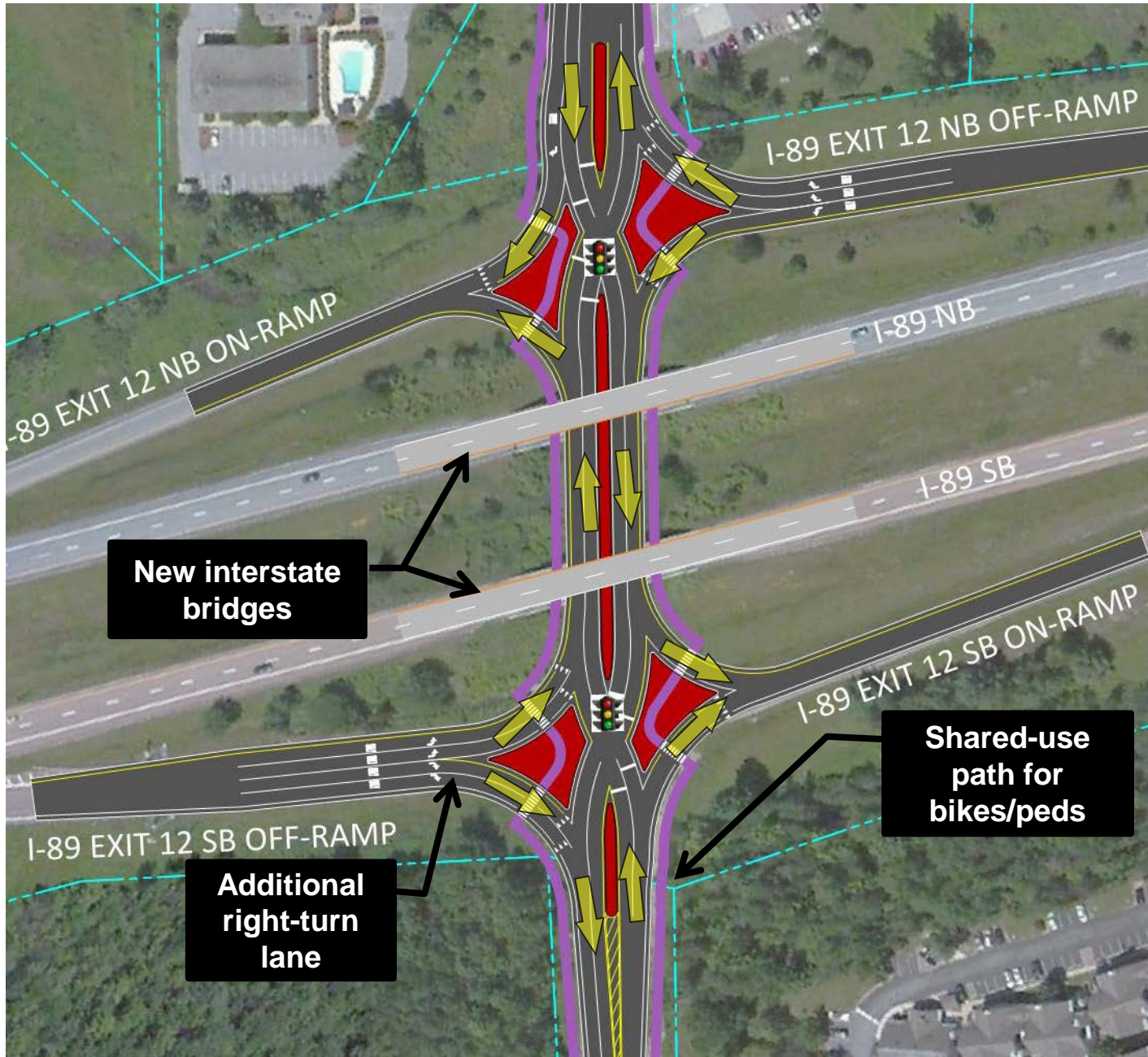
Short Term Alternative:

- **Interchange**
 - Additional approach lanes
- **Shared-Use Path**
 - State Police to Hurricane Lane

Medium Term Alternative:

- **New Street**
 - Harvest Lane to Maple Tree Place
- **VT 2A/New Grid Street Intersection**
 - Signalized Intersection

Phase III: Long Term Exit 12 Interchange *Diverging Diamond*



I-89 EXIT 12 NB ON-RAMP

I-89 EXIT 12 NB OFF-RAMP

I-89 NB

I-89 SB

New interstate bridges

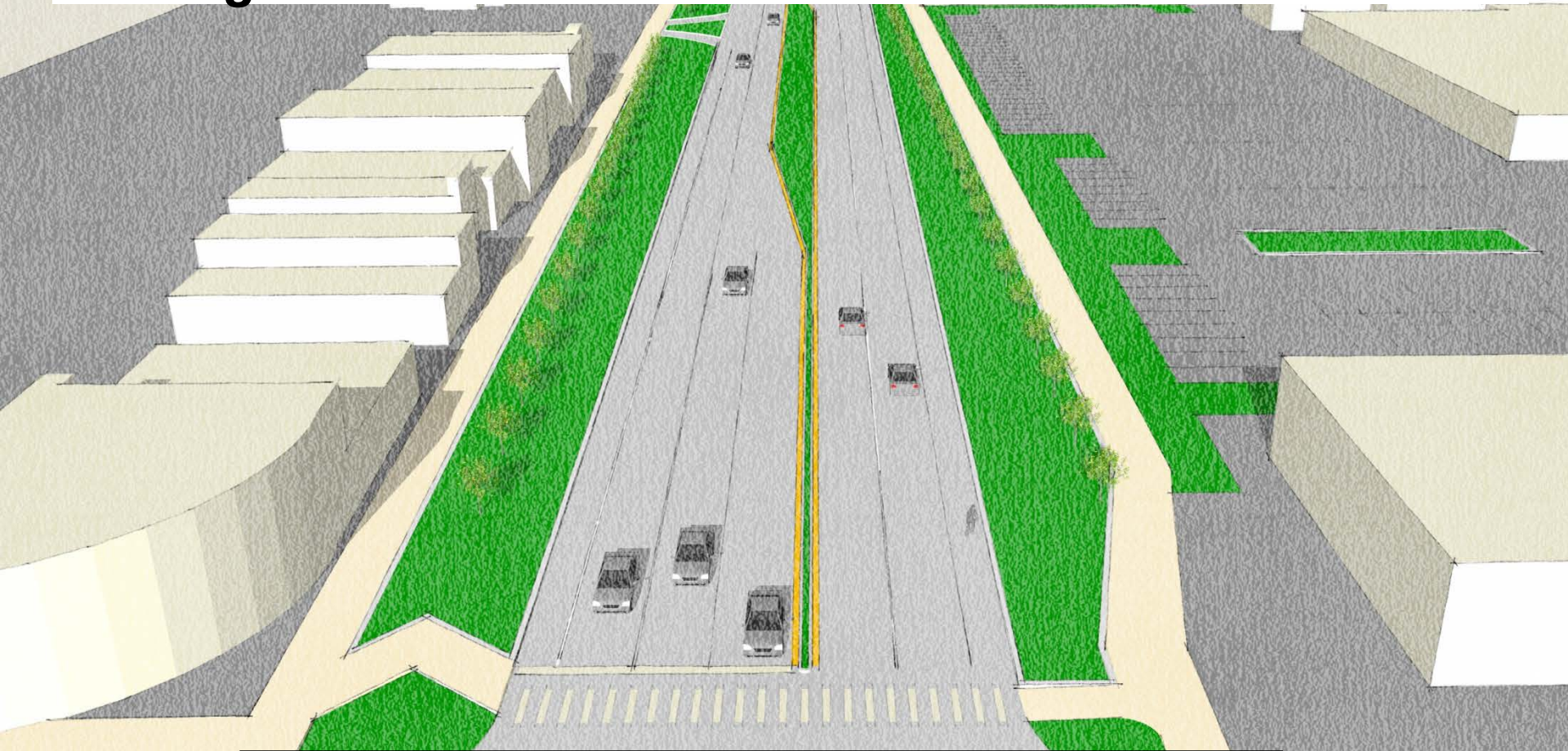
I-89 EXIT 12 SB ON-RAMP

I-89 EXIT 12 SB OFF-RAMP

Additional right-turn lane

Shared-use path for bikes/peds

Phase III Long Term: VT 2A Boulevard *Looking North from Marshall Avenue*

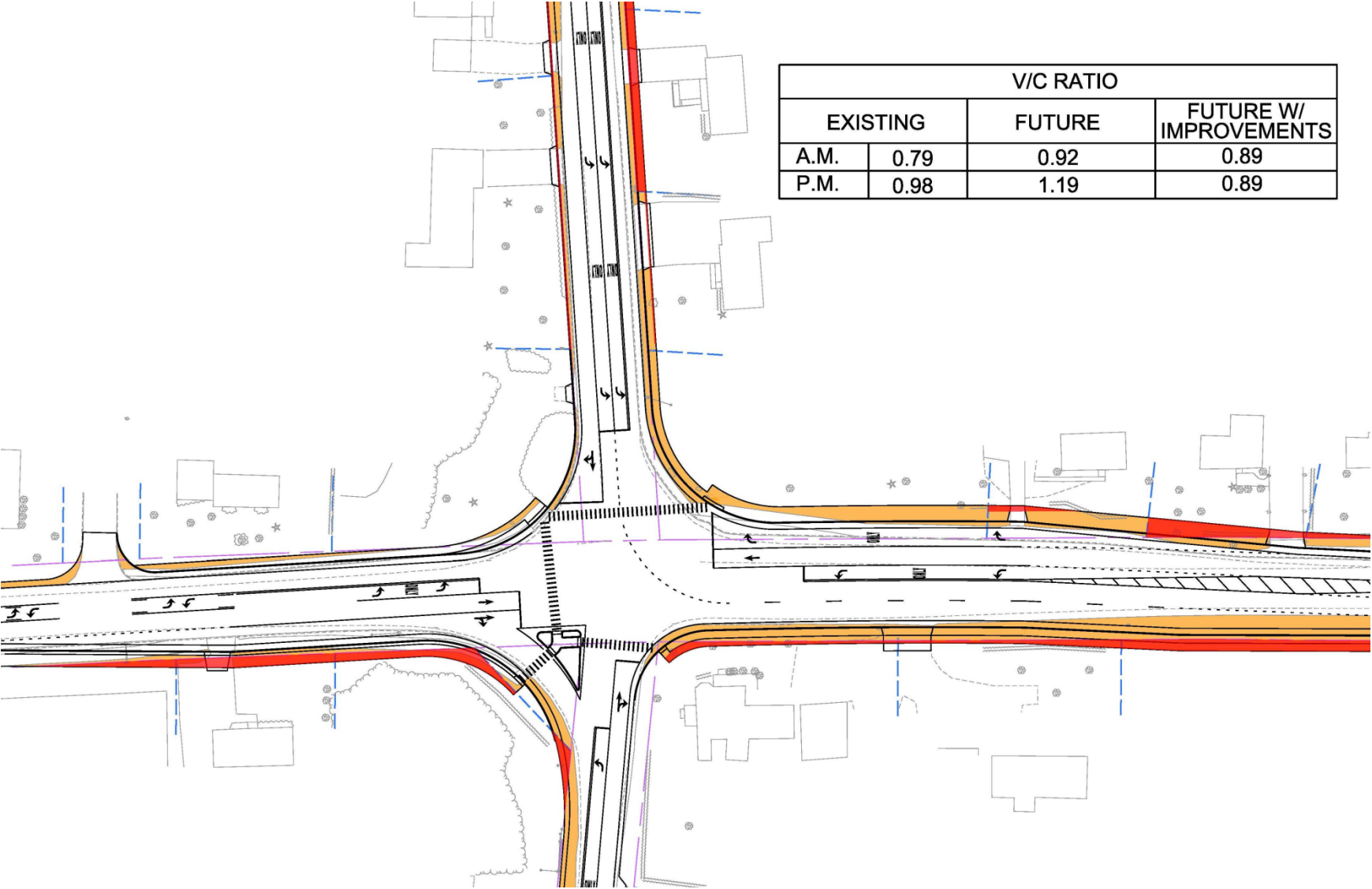


Phase III: VT 2A Industrial Ave/ Mountain View Road to River Cove Road, Williston



Phase III: VT 2A Industrial Ave/ Mountain View Road to River Cove Road, Williston

V/C RATIO			
EXISTING		FUTURE	FUTURE W/ IMPROVEMENTS
A.M.	0.79	0.92	0.89
P.M.	0.98	1.19	0.89



Phase III: VT 2A Industrial Ave/ Mountain View Road to River Cove Road, Williston

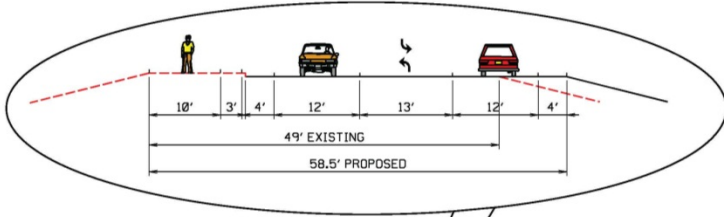


TWO-WAY LEFT TURN LANE

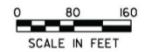
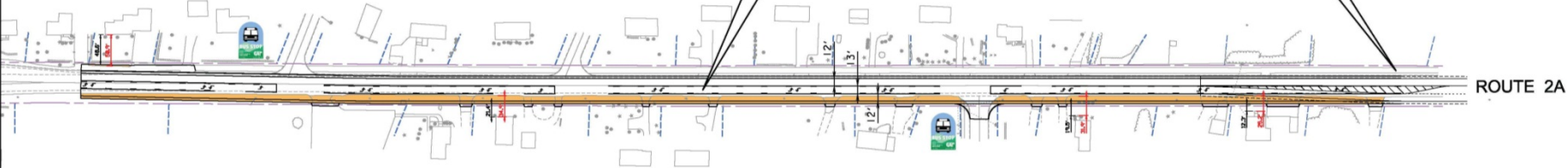
LEGEND

- HIGHWAY R.O.W.
- - - PROPERTY LINES

TO ESSEX JUNCTION →



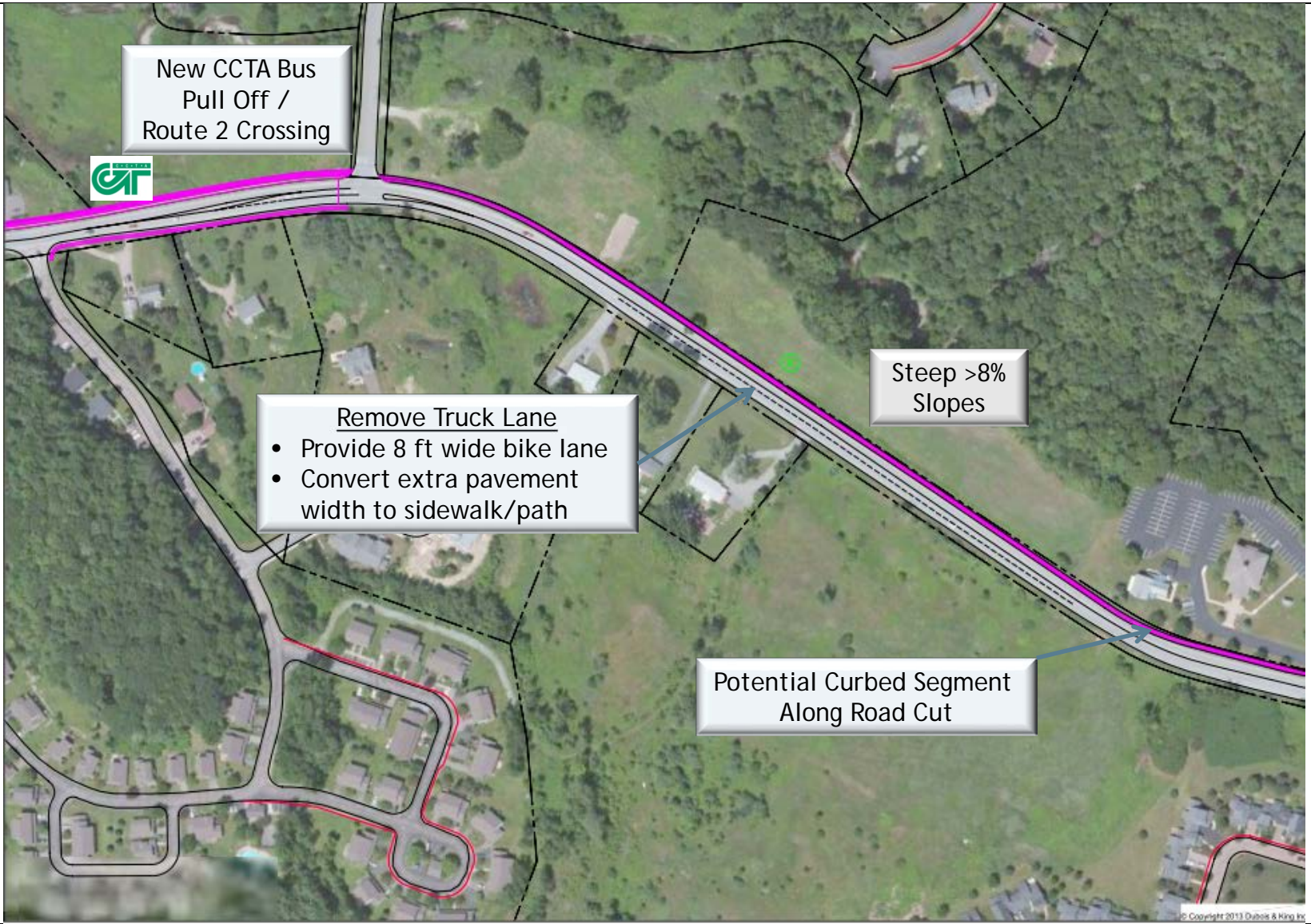
TIE INTO VT 2A - WILLISTON
PROJECT STP-HES 5500(12)



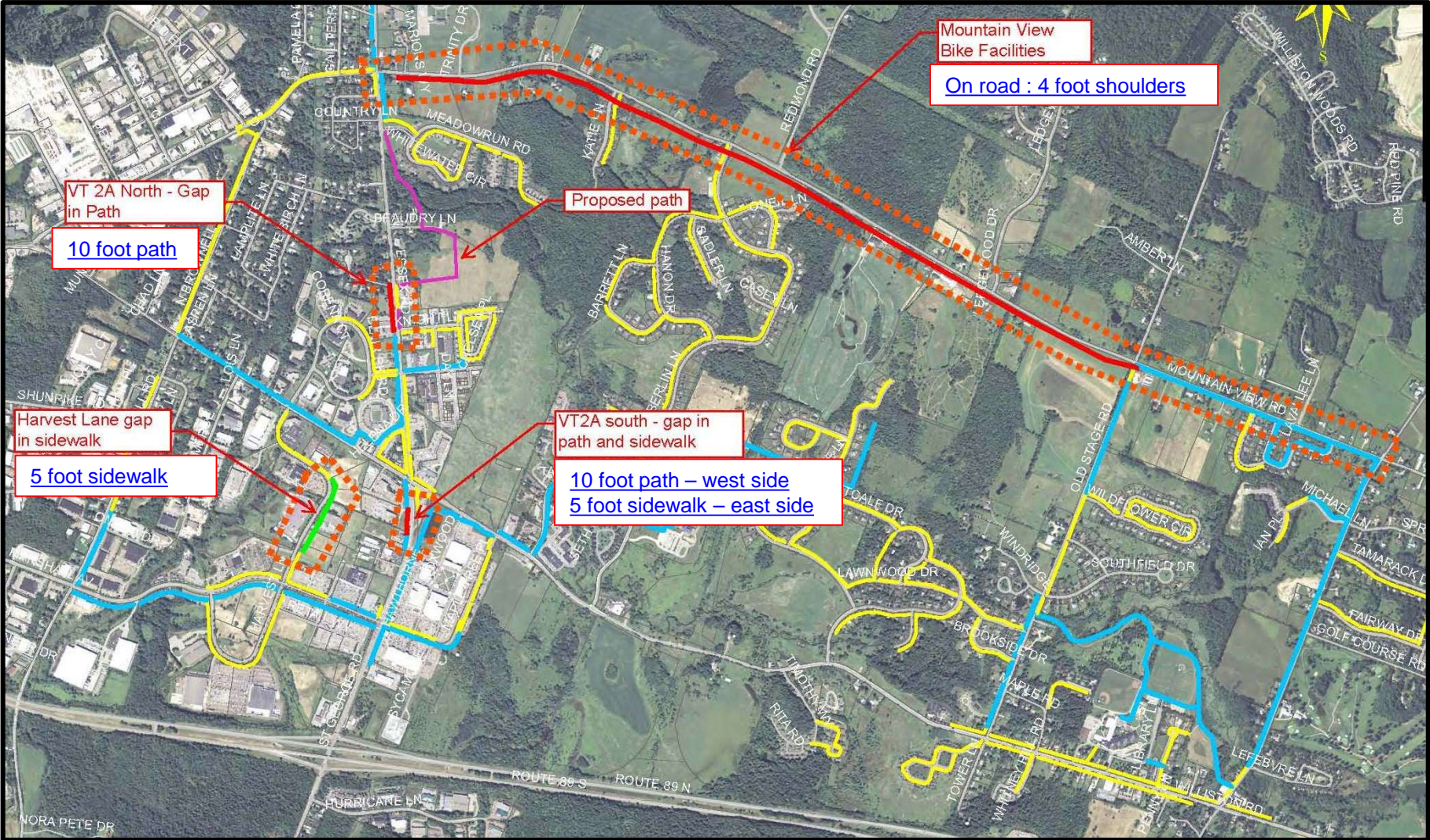
Phase III: US2 Pathway Taft Corners to Williston Village



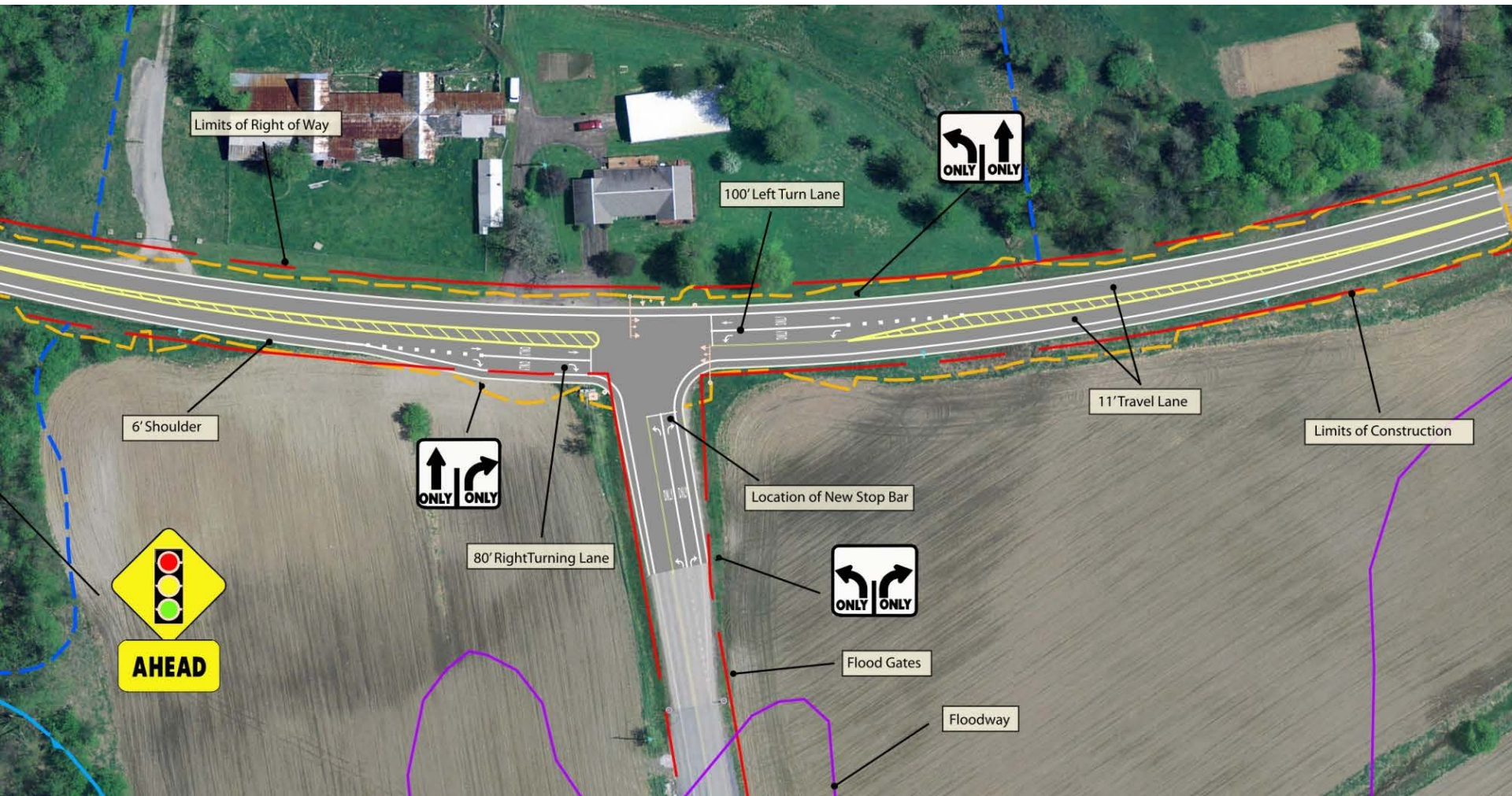
Phase III: US2 Pathway Taft Corners to Williston Village



Phase III: Mountain View Road Multiuse Path, Growth Center Sidewalk, and Multiuse Path Connectors, Williston



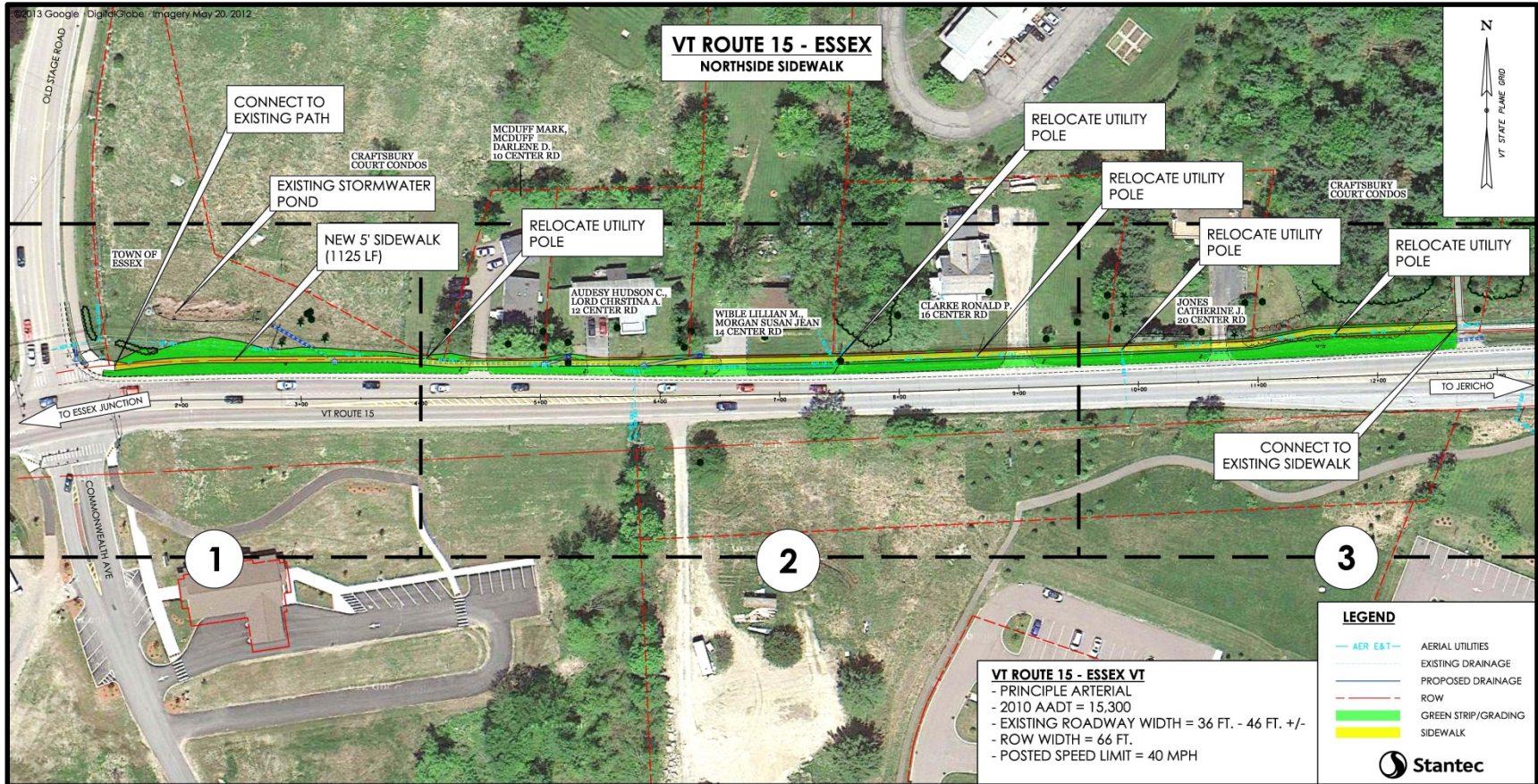
Phase III: VT117/North Williston Road, Williston Flood Hazard Protection & Intersection Upgrade



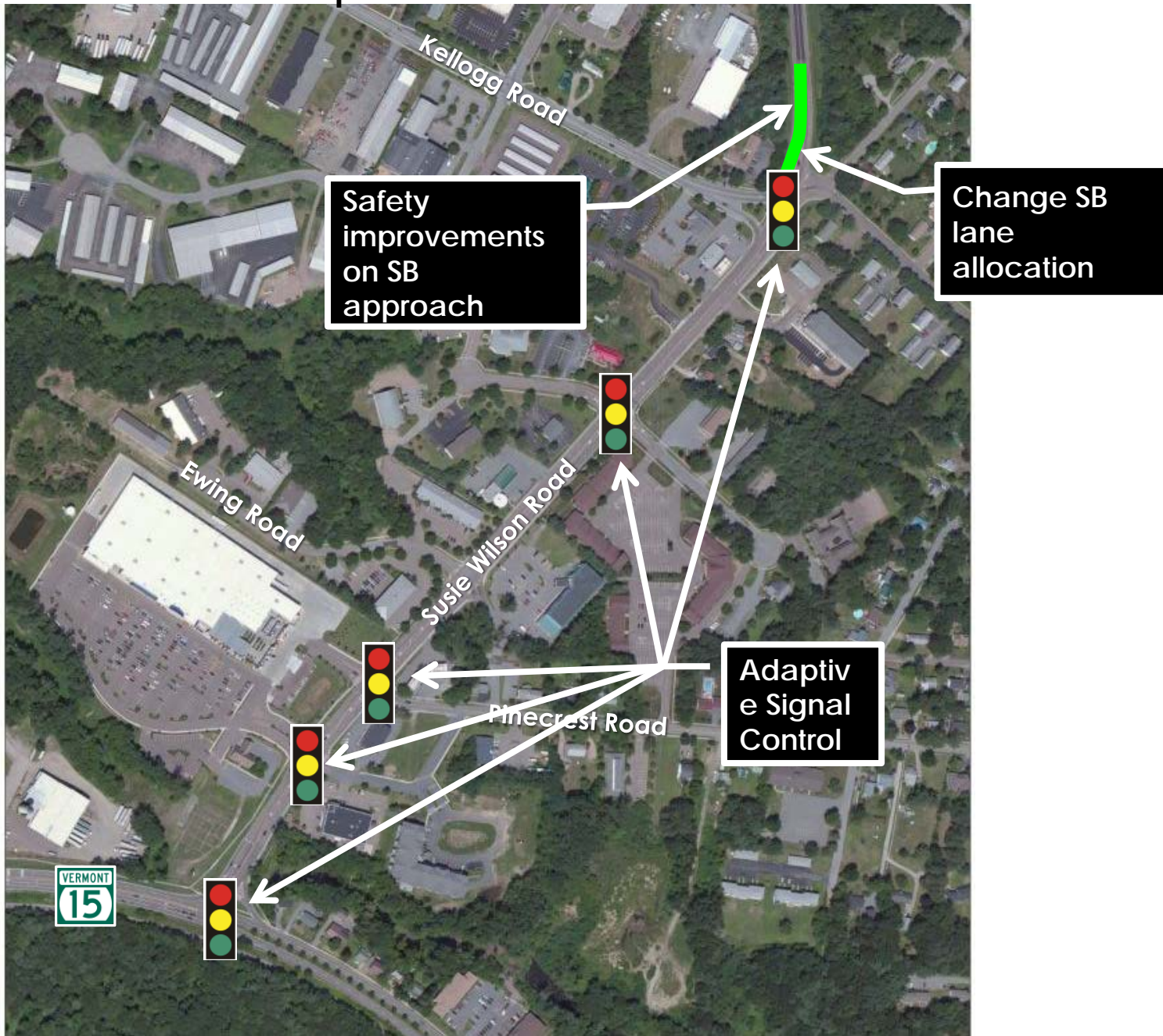
Phase III: VT117/North Williston Road, Williston Flood Hazard Protection & Intersection Upgrade



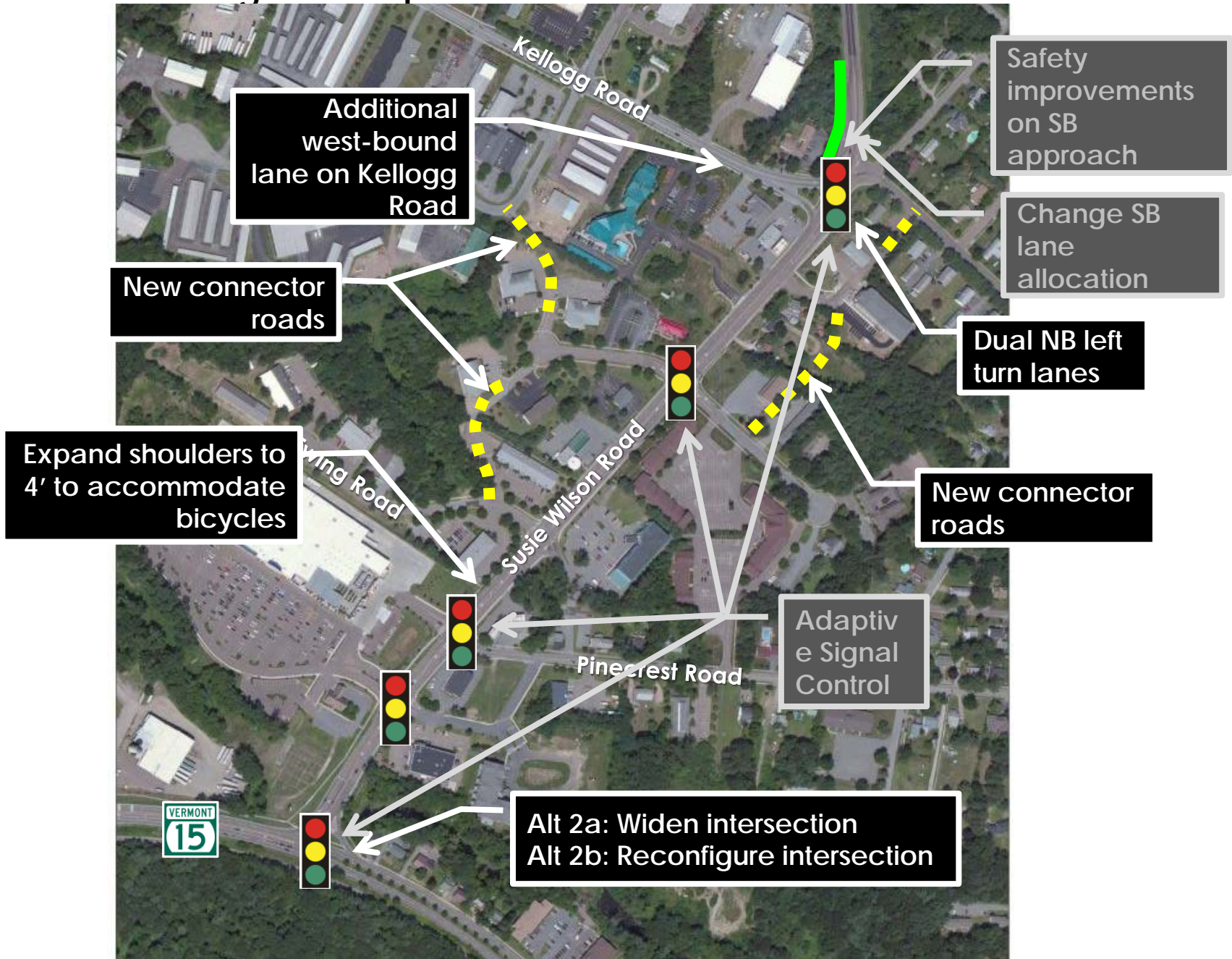
Phase III: VT 15 Sidewalk – Old Stage Road to Essex Way, Essex



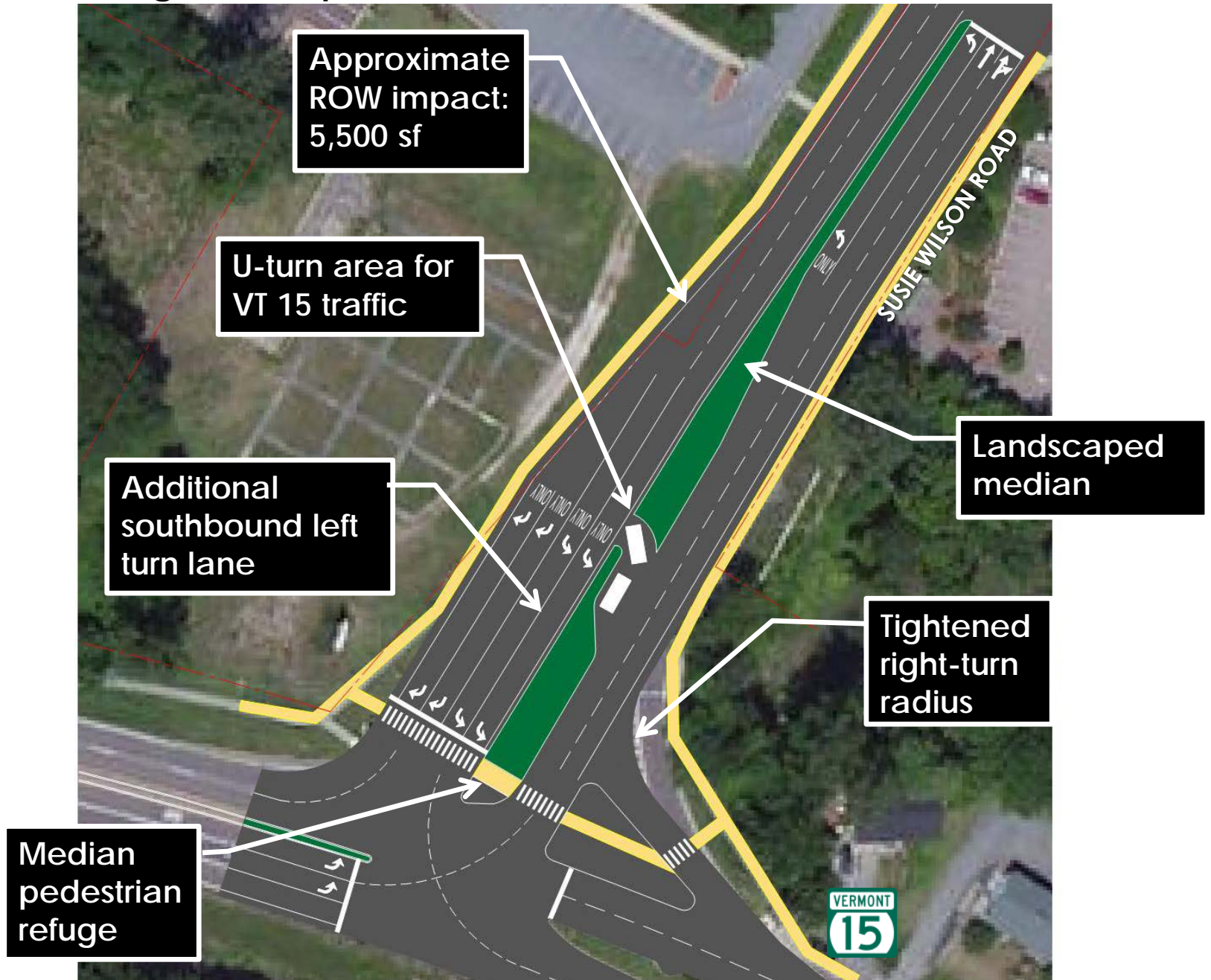
Phase III: VT15/Kellogg Rd/Susie Wilson Rd, Essex Short Term Improvements



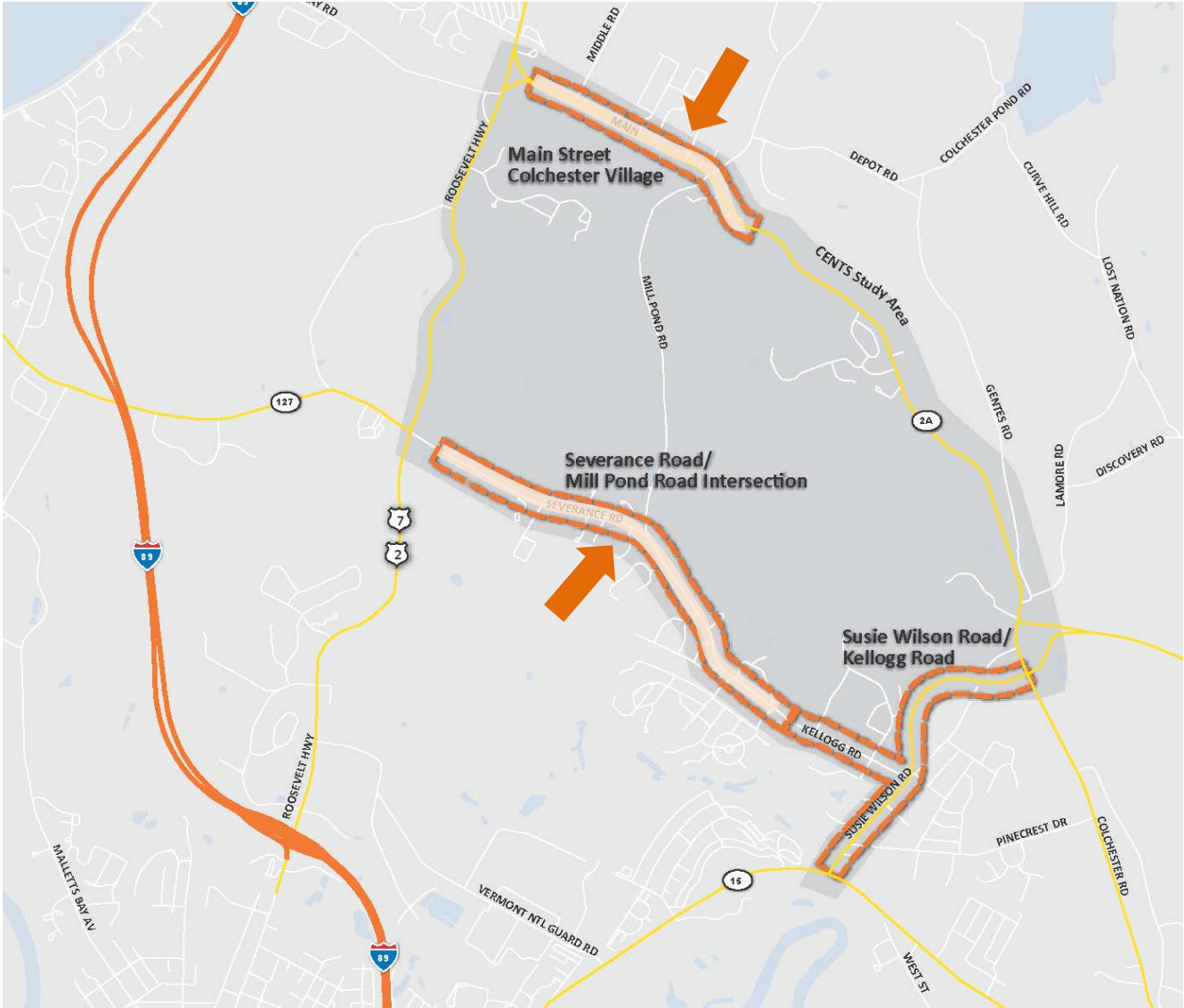
Phase III: VT15/Kellogg Rd/Susie Wilson Rd, Essex Long Term Improvements



Phase III: VT15/Kellogg Rd/Susie Wilson Rd, Essex Long Term Improvements



Phase III: Severance Road/Mill Pond Road, Colchester and Main Street Colchester Village



Phase III: Severance Road/Mill Pond Road, Colchester



Phase III: Main Street Colchester Village

Signal timing optimization



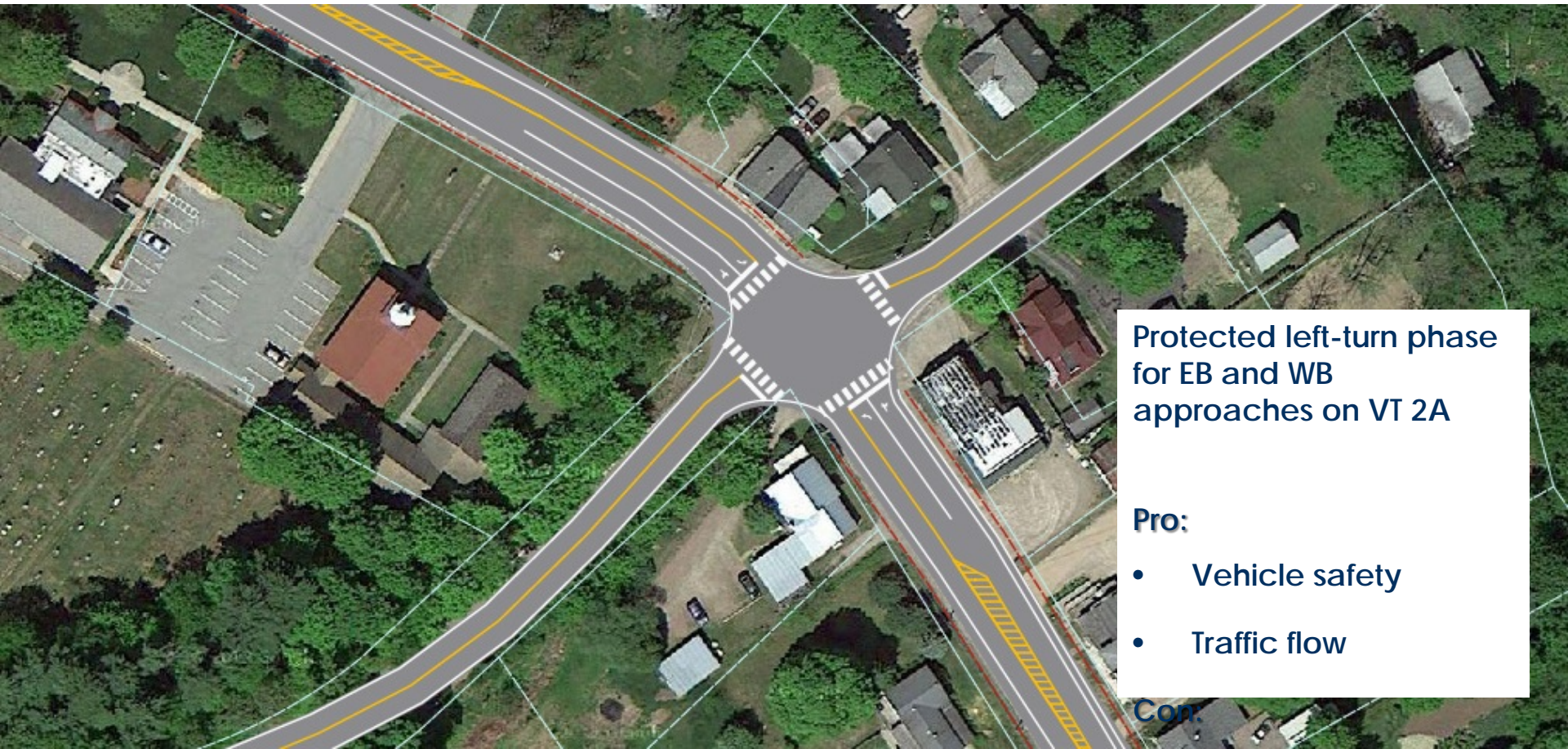
Permanent mast arms



Vehicle Detection



Pedestrian Signal and Detection



Protected left-turn phase
for EB and WB
approaches on VT 2A

Pro:

- Vehicle safety
- Traffic flow

Con:

Phase III: Main Street Colchester Village



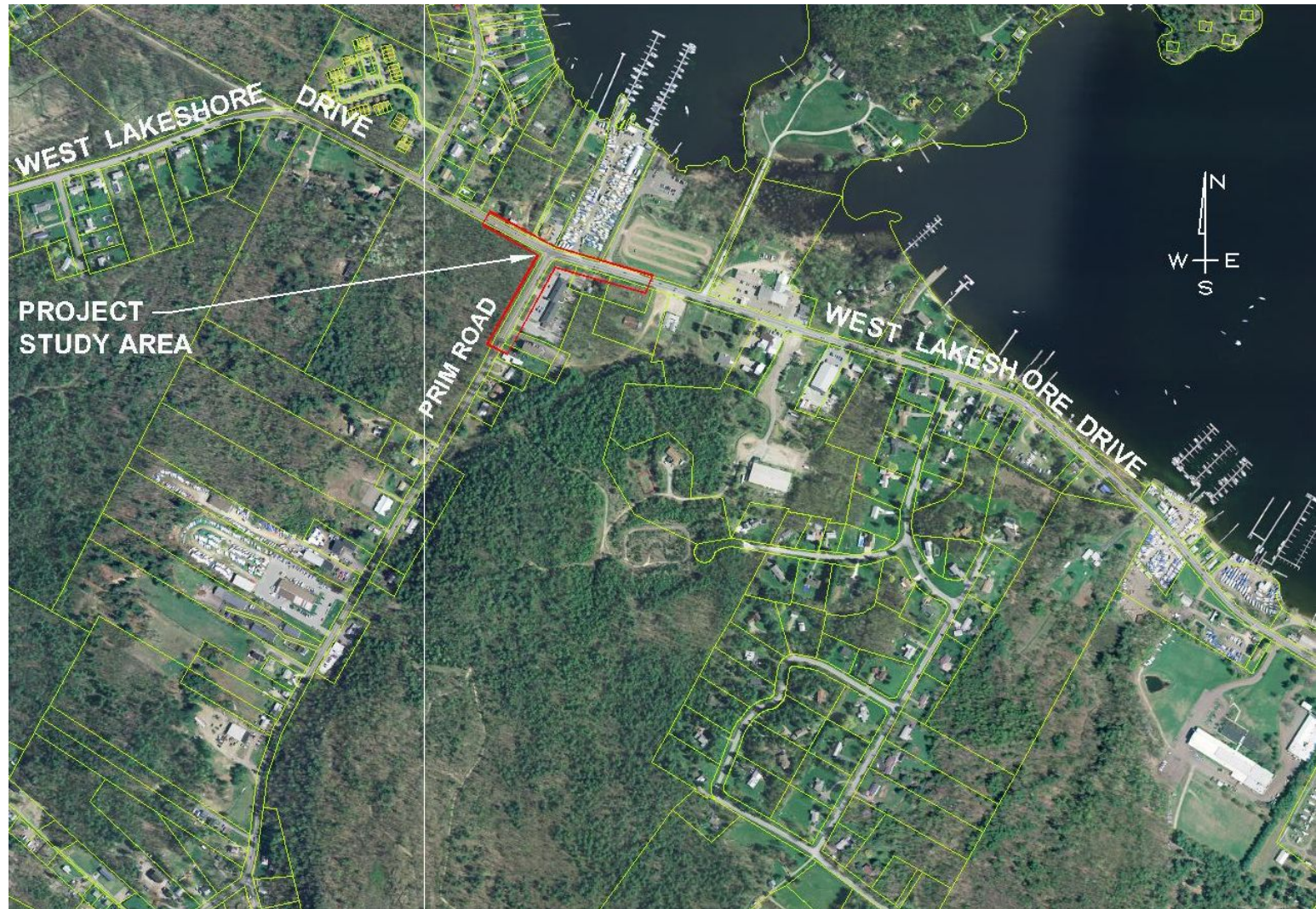
Phase III: Blakely Road/Laker Lane, Colchester



Phase III: Blakely Road/Laker Lane, Colchester



Phase III: Prim Road/West Lakeshore Drive, Colchester



Phase III: Prim Road/West Lakeshore Drive, Colchester



New CCTA Commuter Service:

- Milton/Colchester to Burlington**
- Essex/Williston to Waterbury/Montpelier Service**
- Associated Park & Rides**



New Service